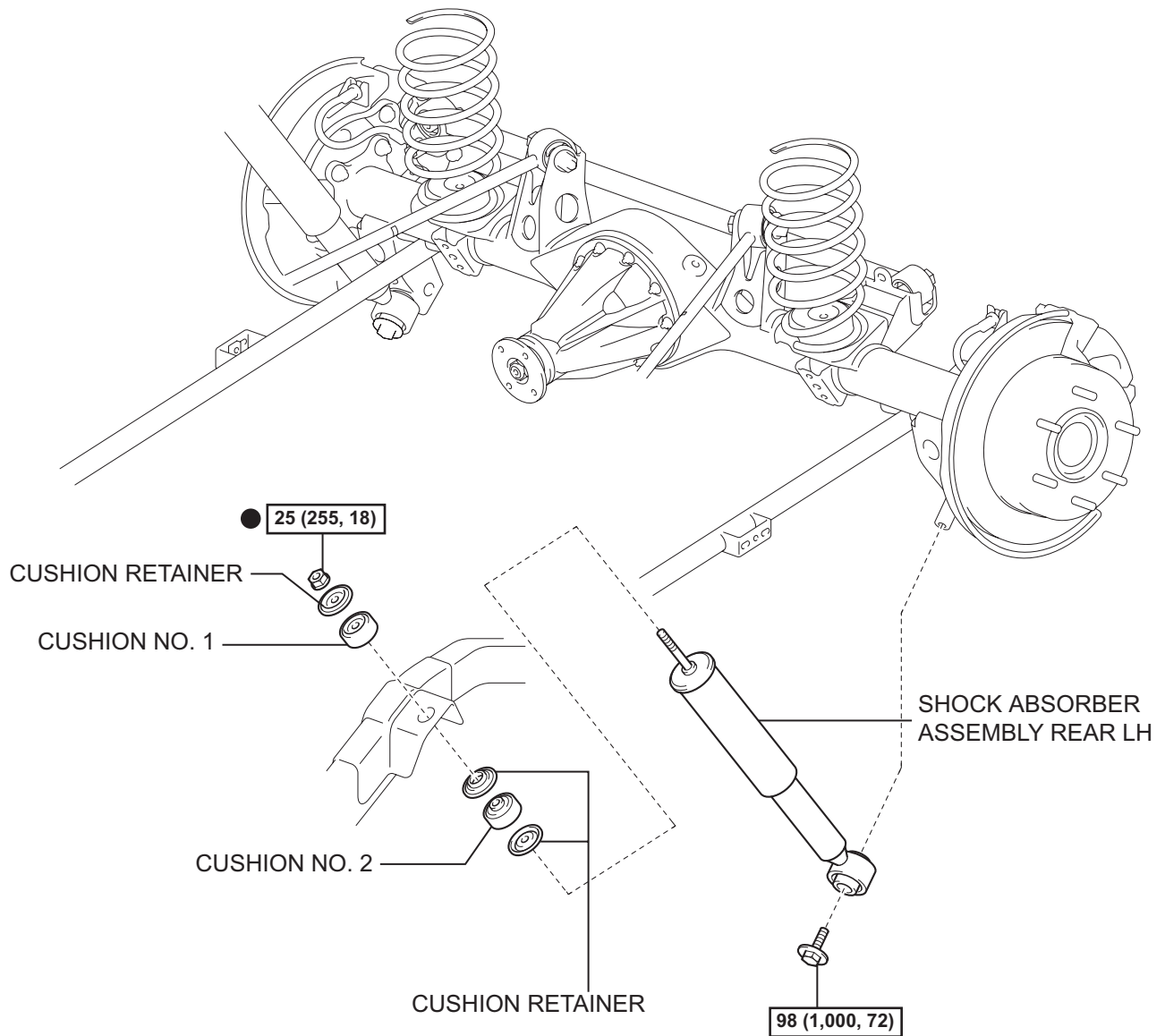


REAR SHOCK ABSORBER (w/o REAS)

COMPONENTS

SP

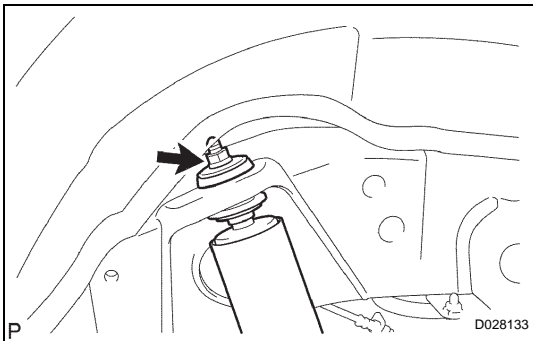
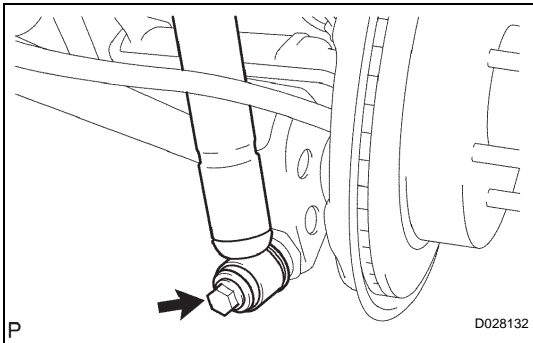


$N \cdot m$ (kgf \cdot cm, ft. \cdot lbf) : Specified torque

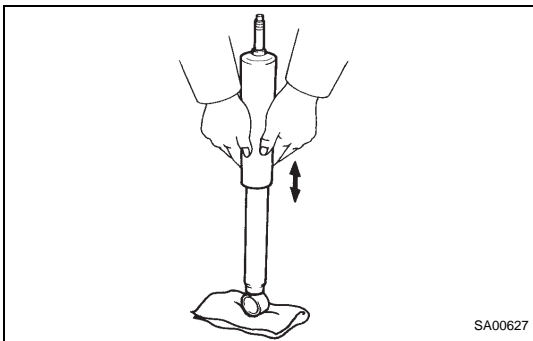
● Non-reusable part

REMOVAL

1. REMOVE REAR WHEEL
2. REMOVE SHOCK ABSORBER ASSEMBLY REAR LH
 - (a) Support the rear axle housing.
 - (b) Remove the bolt and separate the shock absorber assembly rear LH from the rear axle housing.



- (c) Remove the nut, 3 cushion retainers, cushion No. 1, cushion No. 2 and shock absorber assembly rear LH.



INSPECTION

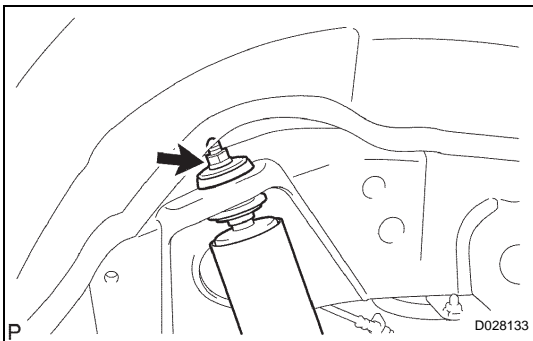
1. INSPECT SHOCK ABSORBER ASSEMBLY REAR LH
 - (a) Compress and extend the shock absorber rod and check that there is no abnormal resistance or unusual sound during operation. If there is any abnormality, replace the shock absorber with a new one.

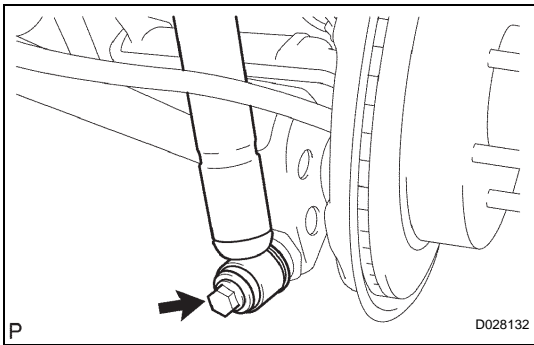
NOTICE:

When disposing of the shock absorber, see **DISPOSAL** (See page [SP-39](#)).

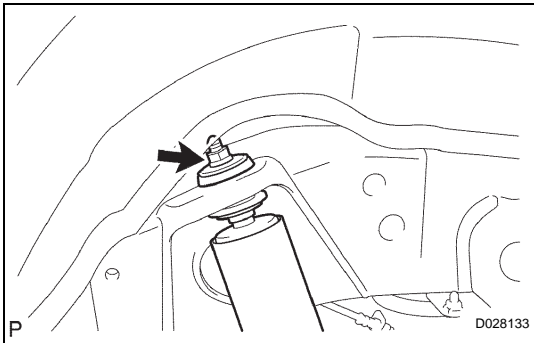
INSTALLATION

1. INSTALL SHOCK ABSORBER ASSEMBLY REAR LH
 - (a) Install the 3 cushion retainers, cushion No. 1, cushion No. 2 and shock absorber assembly rear LH with the nut.





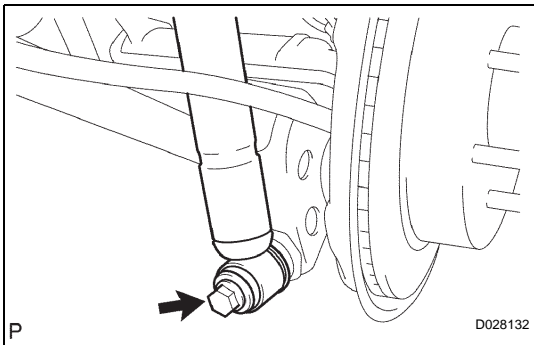
- (b) Install the shock absorber assembly rear LH with the bolt.



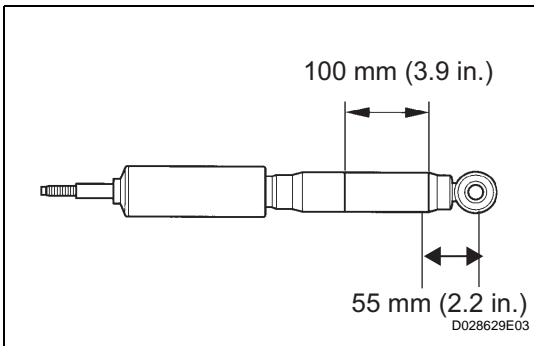
- (c) Fully tighten the nut.
Torque: 25 N*m (255 kgf*cm, 18 ft.*lbf)

- 2. INSTALL REAR WHEEL**
Torque: 112 N*m (1,137 kgf*cm, 83 ft.*lbf)

- 3. STABILIZE SUSPENSION**
 (a) Jack down the vehicle.
 (b) Bounce the vehicle up and down several times to stabilize the suspension.



- 4. FULLY TIGHTEN SHOCK ABSORBER ASSEMBLY REAR LH**
 (a) Fully tighten the bolt.
Torque: 98 N*m (1,000 kgf*cm, 72 ft.*lbf)



DISPOSAL

- 1. DISPOSE OF SHOCK ABSORBER ASSEMBLY REAR LH**
 (a) Fully extend the shock absorber rod.
 (b) Using a drill, make a hole in the cylinder as shown in the illustration to discharge the gas inside.
- CAUTION:**
- When drilling, chips may fly out, and so work carefully.
 - The gas is colorless, odorless and non-poisonous.